

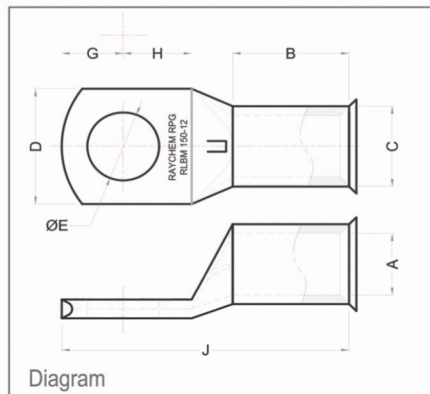
# Cable Lug Product Specification

## Bell Mouth Cable Lug

Cable mm <sup>2</sup>	Stud Size	Dimensions in mm								Product code
		Stud Hole Size	Barrel ID	Barrel OD	Palm Width	Stud Center Distance	Stud Center	Barrel Length	Total Length	
		E	A	C	D	G	H	B	J	
10	M5	5.2	4.5	6.2	11	6	7	10	26	RLBM - 10 - 5
10	M6	6.5	4.5	6.2	11	6	7	10	26	RLBM - 10 - 6
10	M8	8.4	4.5	6.2	12	6	9	10	28	RLBM - 10 - 8
10	M10	10.5	4.5	6.8	15	8	11	11	33	RLBM - 10 - 10
10	M12	13	4.5	6.8	18	9	11	11	36	RLBM - 10 - 12
16	M5	5.2	5.4	7.1	12	7	7	12	30	RLBM - 16 - 5
16	M6	6.5	5.4	7.1	12	7	7	12	30	RLBM - 16 - 6
16	M8	8.4	5.4	7.1	12	7	7	12	30	RLBM - 16 - 8
16	M10	10.5	5.5	7.6	15	8	12	12	36	RLBM - 16 - 10
16	M13	13	5.5	7.6	17	11	13	12	39	RLBM - 16 - 13
16	M16	17	5.5	7.6	21	13	14	12	44	RLBM - 16 - 16
25	M6	6.5	8.8	8.8	13	7	7	12	30	RLBM - 25 - 6
25	M8	8.4	6.8	8.8	13	7	7	12	30	RLBM - 25 - 8
25	M10	10.5	6.8	8.8	15	10	11	13	38	RLBM - 25 - 10
25	M12	13	6.8	9.2	17	10	12	15	41	RLBM - 25 - 12
25	M16	17	6.8	9.2	21	13	14	15	47	RLBM - 25 - 16
35	M6	6.5	8.2	10.6	15.3	9	9	13.5	37	RLBM - 35 - 6
35	M8	8.4	8.2	10.6	15.3	9	9	13.5	37	RLBM - 35 - 8
35	M10	10.5	8.2	10.6	15.3	9	9	13.5	37	RLBM - 35 - 10
35	M12	13	8.2	10.6	15.3	10	12	13.5	41	RLBM - 35 - 12
35	M16	17	8.2	10.6	22	13	14	15	47	RLBM - 35 - 16
50	M6	6.5	9.5	12.4	17.8	9	10	17	42	RLBM - 50 - 6
50	M8	8.4	9.5	12.4	17.8	9	10	17	42	RLBM - 50 - 8
50	M10	10.5	9.5	12.4	17.8	9	10	17	42	RLBM - 50 - 10
50	M13	13	9.5	12.4	20	10	12	17	45	RLBM - 50 - 13
50	M14	14.5	9.5	12.4	22	15	15	18	54	RLBM - 50 - 14
50	M16	17	9.5	12.4	22	15	15	18	54	RLBM - 50 - 16
50	M20	21	9.5	12.4	26	16	18	18	60	RLBM - 50 - 20
70	M8	8.4	11.3	14.6	21	11	11	18.5	47	RLBM - 70 - 8
70	M10	10.5	11.3	14.6	21	11	11	18.5	47	RLBM - 70 - 10
70	M12	13	11.3	14.6	21	11	11	18.5	47	RLBM - 70 - 12
70	M14	14.5	11.3	14.6	22	14	15	18.5	55	RLBM - 70 - 14
70	M16	17	11.3	14.6	26	14	16	18.5	56	RLBM - 70 - 16
70	M20	21	11.3	14.6	28	16	18	18.5	63	RLBM - 70 - 20
95	M8	8.4	13.5	17.4	25	12	13	21	53	RLBM - 95 - 8
95	M10	10.5	13.5	17.4	25	12	13	21	53	RLBM - 95 - 10
95	M12	13	13.5	17.4	25	12	13	21	53	RLBM - 95 - 12
95	M14	14.5	13.5	17.4	25	14	15	22	55	RLBM - 95 - 14
95	M16	17	13.5	17.4	25	14	16	22	56	RLBM - 95 - 16
95	M20	21	13.5	17.4	28	15	16	22	63	RLBM - 95 - 20
120	M8	8.4	15	19.4	28	13	14	23	60	RLBM - 120 - 8
120	M10	10.5	15	19.4	28	13	14	23	60	RLBM - 120 - 10
120	M12	13	15	19.4	28	13	14	23	60	RLBM - 120 - 12
120	M14	14.5	15	19.4	28	13	14	23	60	RLBM - 120 - 14
120	M16	17	15	19.4	28	16	16	23	64	RLBM - 120 - 16
120	M20	21	15	19.4	28	16	20	23	68	RLBM - 120 - 20



Bell Mouth Lug



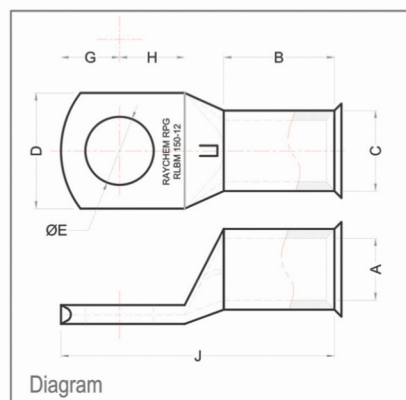
Diagram

### FEATURES

- Bell Mouth Structure provides easy insertion for stranded copper cables
- With inspection hole to ensure full cable insertion
- Tin plated copper lugs to improve electrical conductivity and avoid oxidation of copper
- Annealed material optimizes material and crimping properties
- Flat contact surface and precise stud holes as per the Metric standard
- Chamfered mouth for easy cable insertion
- Can be available with /without inspection window

## Bell Mouth Cable Lug Continued.....

Cable mm <sup>2</sup>	Stud Size	Dimensions in mm								Product code
		Stud Hole Size E	Barrel ID A	Barrel OD C	Palm Width D	Stud Center Distance G	Stud Center H	Barrel Length B	Total Length J	
150	M8	8.4	16.5	21.2	30	16	16	27	70	RLBM - 150 - 8
150	M10	10.5	16.5	21.2	30	16	16	27	70	RLBM - 150 - 10
150	M12	13	16.5	21.2	30	16	16	27	70	RLBM - 150 - 12
150	M14	14.7	16.5	21.2	30	16	16	27	70	RLBM - 150 - 14
150	M16	17	16.5	21.2	30	16	16	27	70	RLBM - 150 - 16
150	M20	21	16.5	21.2	30	16	16	27	73	RLBM - 150 - 20
185	M10	10.5	18.5	23.5	34	17	19	32	80	RLBM - 185 - 10
185	M12	13	18.5	23.5	34	17	19	32	80	RLBM - 185 - 12
185	M14	14.7	18.5	23.5	34	17	19	32	80	RLBM - 185 - 14
185	M16	17	18.5	23.5	34	17	19	32	80	RLBM - 185 - 16
185	M20	21	18.5	23.5	34	17	19	32	80	RLBM - 185 - 20
240	M10	10.5	21	26.5	38	20	21	39	94	RLBM - 240 - 10
240	M12	13	21	26.5	38	20	21	39	94	RLBM - 240 - 12
240	M14	14.5	21	26.5	38	20	21	39	94	RLBM - 240 - 14
240	M16	17	21	26.5	38	20	21	39	94	RLBM - 240 - 16
240	M20	21	21	26.5	38	20	21	39	94	RLBM - 240 - 20



## Four Hole Cable Lug

Cable mm <sup>2</sup>	Dimensions in mm								Product code
	Stud Hole Size E	Barrel ID A	Barrel OD C	Palm Width D	Stud Center Distance L	Stud Center H	Barrel Length B	Total Length J	
400	10.5	28.5	36.5	52.5	25.0	35.0	44.0	114.0	RLT 400 4E 10
400	13.0	28.5	36.5	52.5	25.0	35.0	44.0	114.0	RLT 400 4E 12
400	14.5	28.5	36.5	52.5	25.0	35.0	44.0	114.0	RLT 400 4E 14
400	17.0	28.5	36.5	52.5	25.0	35.0	44.0	114.0	RLT 400 4E 16
400	21.0	28.5	36.5	52.5	25.0	35.0	44.0	114.0	RLT 400 4E 20
500	14.5	30.0	39.0	56.0	25.0	35.0	48.0	124.0	RLT 500 4E 14
500	17.0	30.0	39.0	56.0	25.0	35.0	48.0	124.0	RLT 500 4E 16
500	21.0	30.0	39.0	56.0	25.0	35.0	48.0	124.0	RLT 500 4E 20
630	17.0	35.0	45.0	65.0	25.0	35.0	56.0	144.0	RLT 630 4E 16
630	21.0	35.0	45.0	65.0	25.0	35.0	56.0	144.0	RLT 630 4E 20
800	21.0	39.0	50.6	72.0	25.0	35.0	78.0	170.0	RLT 800 4E-20



### FEATURES

- Heavy Duty lugs for transformer application
- Facilitates good heat dissipation
- With inspection hole to ensure full cable insertion
- Tin plated copper lugs to improve electrical conductivity and avoid oxidation of copper
- Annealed material optimizes material and crimping properties
- Chamfered mouth for easy cable insertion
- Can be available with /without inspection window

