

Cable Lug

Product Specification

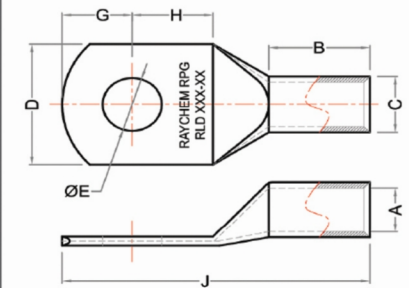
Din 46235 Cable Lug

Cable mm ²	Stud Size	Dimensions in mm								Product code
		Stud Hole Size	Palm Width	Barrel ID	Barrel Length	Barrel OD	Stud Center Distance	Stud Center	Total Length	
		E	D	A	B	C	G	H	J	
6	M5	5.3	8.5	3.8	10	5.5	6.5	7.5	30.5	RLD - 6 - 5
10	M6	6.5	8.5	4.5	10	6	7	8.5	34.5	RLD - 10 - 6
16	M6	6.5	12	5.5	20	8.5	7.5	8	42.5	RLD - 16 - 6
16	M8	8.4	12	5.5	20	8.5	10	10	45	RLD - 16 - 8
16	M10	10.5	17	5.5	20	8.5	12	12	49	RLD - 16 - 10
16	M12	13	19	5.5	20	8.5	13	13	50	RLD - 16 - 12
25	M6	6.5	15	7	20	10	7.5	8	46.5	RLD - 25 - 6
25	M8	8.4	15	7	20	10	10	10	49	RLD - 25 - 8
25	M10	10.5	17	7	20	10	12	12	51	RLD - 25 - 10
25	M12	13	19	7	20	10	13	13	52	RLD - 25 - 12
35	M8	8.4	17	8.2	20	12.5	7.5	8	49.5	RLD - 35 - 8
35	M10	10.5	19	8.2	20	12.5	10	10	52	RLD - 35 - 10
35	M12	13	21	8.2	20	12.5	12	12	54	RLD - 35 - 12
50	M8	8.4	22	10	28	14.5	10	10	61	RLD - 50 - 8
50	M10	10.5	22	10	28	14.5	12	12	63	RLD - 50 - 10
50	M12	13	23	10	28	14.5	13	13	64	RLD - 50 - 12
50	M16	17	28	10	28	14.5	14.5	14.5	65.5	RLD - 50 - 16
70	M10	10.5	24	11.5	28	16.5	10	10	64	RLD - 70 - 10
70	M12	13	24	11.5	28	16.5	12	12	66	RLD - 70 - 12
70	M16	17	32	11.5	28	16.5	13	13	67	RLD - 70 - 16
70	M20	21	32	11.5	28	16.5	14.5	14.5	68.5	RLD - 70 - 20
95	M10	10.5	28	13.5	35	19	12	12	76	RLD - 95 - 10
95	M12	13	28	13.5	35	19	12	12	76	RLD - 95 - 12
95	M16	17	32	13.5	35	19	13	13	80	RLD - 95 - 16
95	M20	21	34	13.5	35	19	14.5	14.5	81.5	RLD - 95 - 20
120	M10	10.5	32	15.5	35	21	15	16	83	RLD - 120 - 10
120	M12	13	32	15.5	35	21	16	17	84	RLD - 120 - 12
120	M16	17	32	15.5	35	21	18	19	87	RLD - 120 - 16
120	M20	21	38	15.5	35	21	19	20	88	RLD - 120 - 20
150	M10	10.5	34	17	35	23.5	15	16	92	RLD - 150 - 10
150	M12	13	34	17	35	23.5	16	17	93	RLD - 150 - 12
150	M16	17	34	17	35	23.5	19	20	96	RLD - 150 - 16
150	M20	21	40	17	35	23.5	19	20	96	RLD - 150 - 20
185	M10	10.5	37	19	40	25.5	15	16	96	RLD - 185 - 10
185	M12	13	37	19	40	25.5	16	17	97	RLD - 185 - 12
185	M16	17	37	19	40	25.5	19	20	100	RLD - 185 - 16
185	M20	21	40	19	40	25.5	19	20	100	RLD - 185 - 20
240	M10	10.5	42	21.5	40	29	16	17	107	RLD - 240 - 10
240	M12	13	42	21.5	40	29	19	20	110	RLD - 240 - 12
240	M16	17	42	21.5	40	29	19	20	110	RLD - 240 - 16
240	M20	21	46	21.5	40	29	21	22	112	RLD - 240 - 20
300	M12	13	48	24	50	32	19	22	119	RLD - 300 - 12
300	M16	17	48	24	50	32	19	22	119	RLD - 300 - 16
300	M20	21	48	24	50	32	22	22	122	RLD - 300 - 20
400	M16	17	55	27.5	70	38.5	25	25	140	RLD - 400 - 16
400	M20	21	55	27.5	70	38.5	25	25	140	RLD - 400 - 20
500	M20	21	60	31	70	42	25	25	152	RLD - 500 - 20
630	M20	21	60	34.5	80	44	25	25	160	RLD - 630 - 20
800	M20	21	70	40	100	52	30	30	195	RLD - 800 - 20
1000	M20	21	80	44	100	58	30	30	195	RLD - 1000 - 20



Crimp Type Lug (DIN 46235)

Diagram



FEATURES

- Lugs as per DIN46235 Standard
- Tin Plated to inhibit corrosion
- Material - Electrolytic Copper
- Enclosed barrel prevent corrosion material from entering barrel when used in harsh environment